

# Village Apron

Designed by LaRose Blanton, Carrie Bloomston, Bonnie Bobman, Danny Heyen, Sally Guenther, Sharon Margiotta, Julie Schoen, Becky Schroeder, and Sharon Zolondek.

Featuring the Paint Collection by Carrie Bloomston of SUCH Designs



Check [www.windhamfabrics.com](http://www.windhamfabrics.com) Free Project section to see if there are any pattern updates before you start your quilt project

WINDHAM FABRICS

# Village Apron

page 2

All seam allowances are ½" unless otherwise stated. Apron is fully reversible.

## Materials

1 1/2 yard focus print (note directionality of the print---add ¼ yard if it is a directional fabric)

1 1/2 yard contrasting print for lining/other side

½ yard contrasting print for pockets

1/3 yard contrasting print for binding

## Cutting Instructions

1. Cut 1 apron front from focus print. Pattern pieces 1-7 are for the apron front. Print on 8.5 x 11 in paper and tape pieces together. Note: See diagram on last page of directions for placing template and also be aware of the directionality of your print.
2. Cut 1 apron lining using same pattern piece from contrasting print.
3. Cut 1 pocket from contrasting print on the fold of the fabric with right sides together. The fold is the top of the pocket. Pattern pieces A-D are for the pocket. Note: To add a pocket on the reverse side, repeat this step to cut another pocket piece.
4. Cut (3) 3" strips of binding across the WOF (width of fabric, 44")

# Village Apron

page 3

## Sewing Instructions

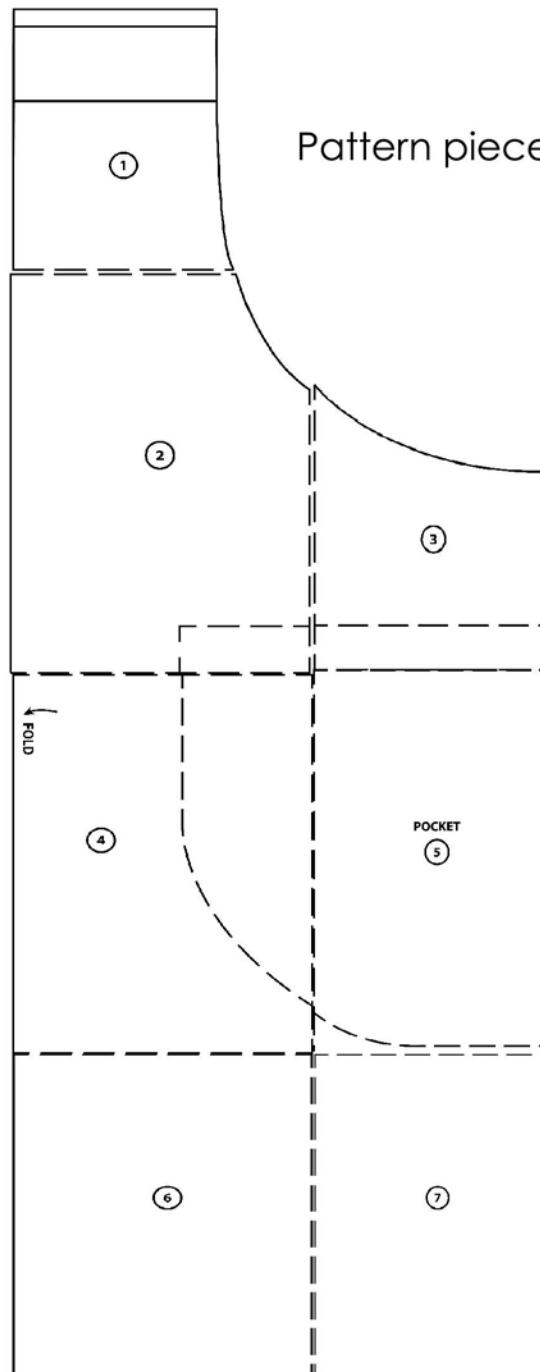
1. Prepare  $\frac{3}{4}$ " double fold binding for apron strap. Set aside.
2. Make pocket: a. With your folded pocket fabric still right sides together, sew the curved edge using  $\frac{1}{2}$ " seam allowance. Clip curved seam. b. Turn right-side out and gently press the curve.  
c. Topstitch along the top edge  $\frac{1}{2}$ " from edge.
3. Pin pocket 4" below the top left side of the apron front. \*\*If making a pocket for the reverse side, repeat this step and next step on the lining side.
4. Edge-stitch the curve to attach the pocket to the apron front. Reinforce by backstitching 2-3 times.
5. Pin apron front to apron lining, right sides together.
6. Sew along the SIDES and BOTTOM only.
7. Turn inside out and press.
8. Treating the apron front and lining as one piece of fabric, fold neck 2  $\frac{1}{2}$  " under towards the lining. Press neck edge. Fold raw edges together  $\frac{1}{2}$ " to hide these raw edges. Press and pin.
9. Topstitch 1  $\frac{3}{4}$ " down from the top of neck to enclose raw edges.
10. Edgestitch  $\frac{1}{8}$ " from folded raw edges on neck, sides and bottom.
11. Attach binding to the apron. Fold binding in half and mark the center of the neck and also mark 10" down from fold on each side of the binding.
12. Line up marks with top edges of the neckline and pin in place. Enclose the raw edges on armholes of apron within the folded binding and pin.

# Village Apron

page 4

13. To finish binding tape ends: open short ends of binding and fold  $\frac{1}{4}$ " towards inside of the binding tube and pin.

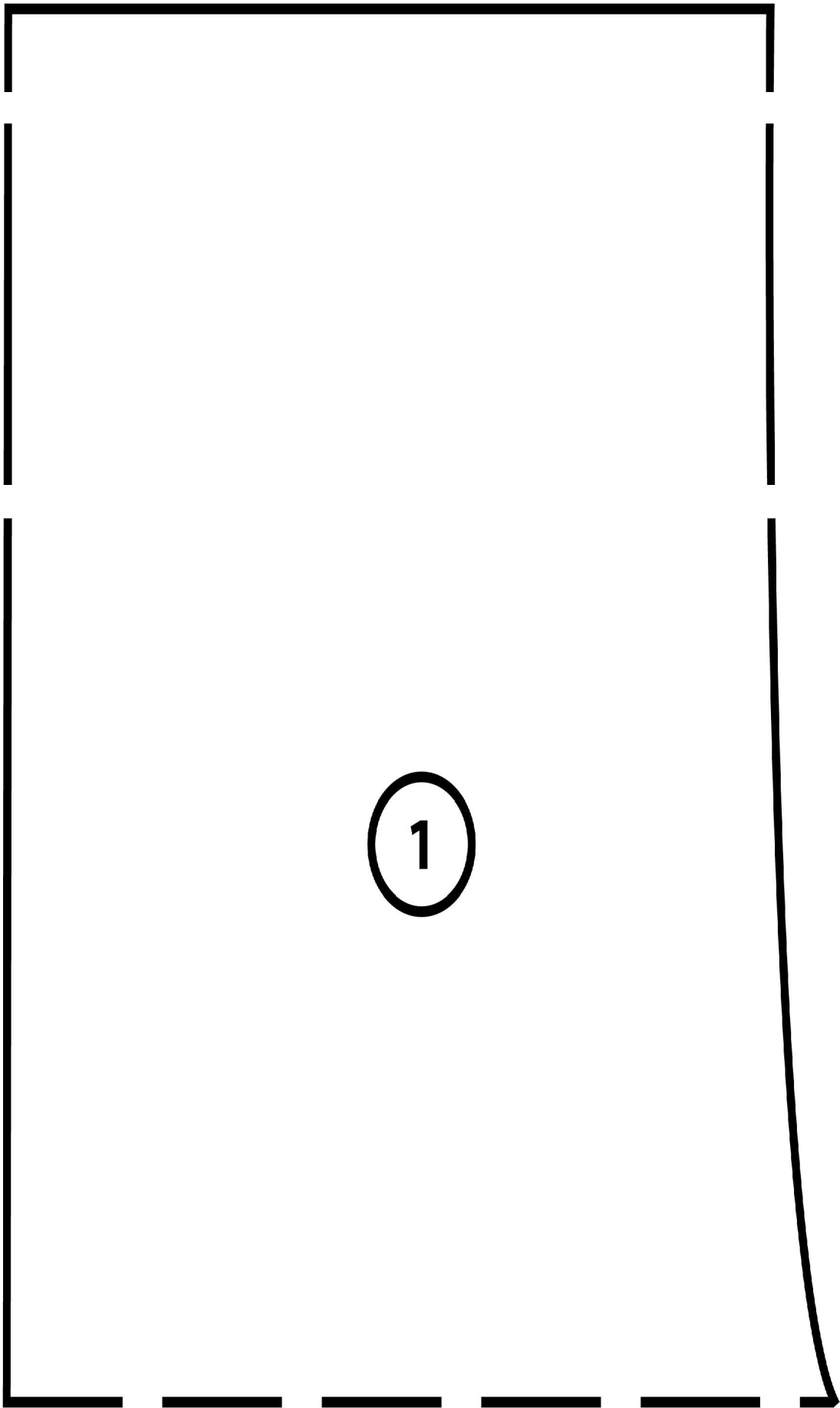
14. Start sewing at one short edge of the binding tape and continue edgestitching the open edge all the way around the neckline to the other end.

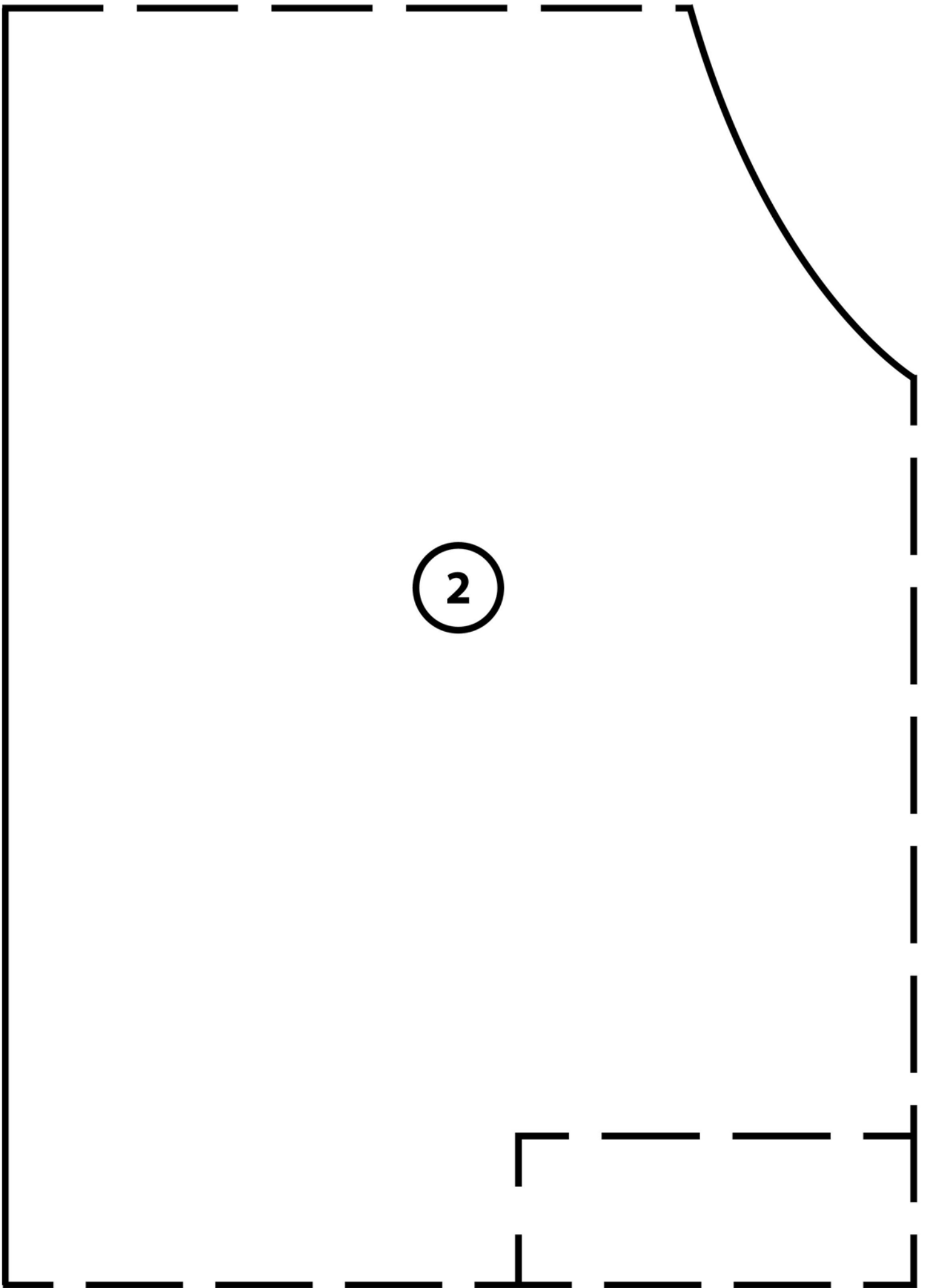


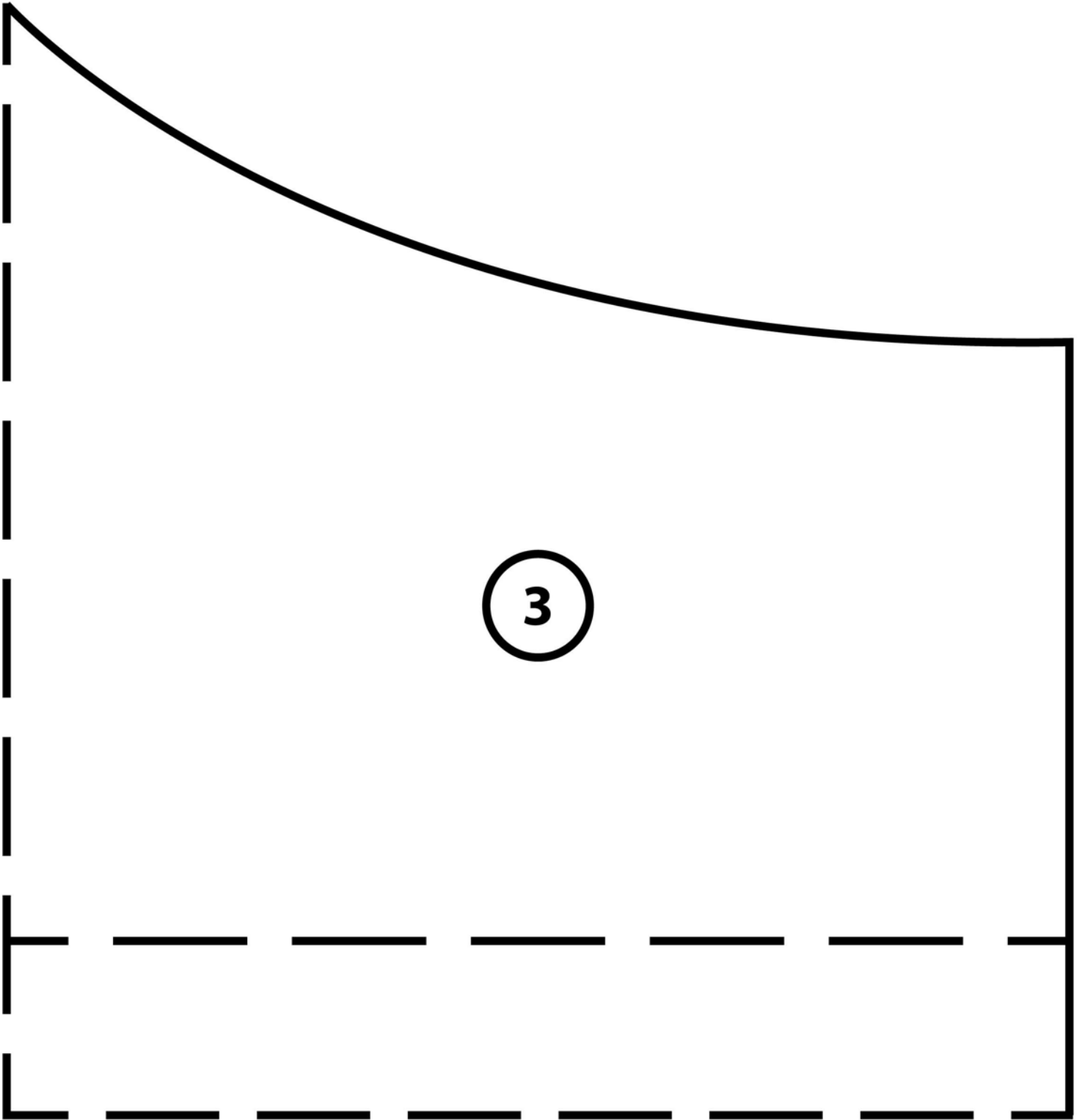
Pattern piece layout diagram

ENJOY YOUR APRON!

VILLAGE APRON PIECE 1



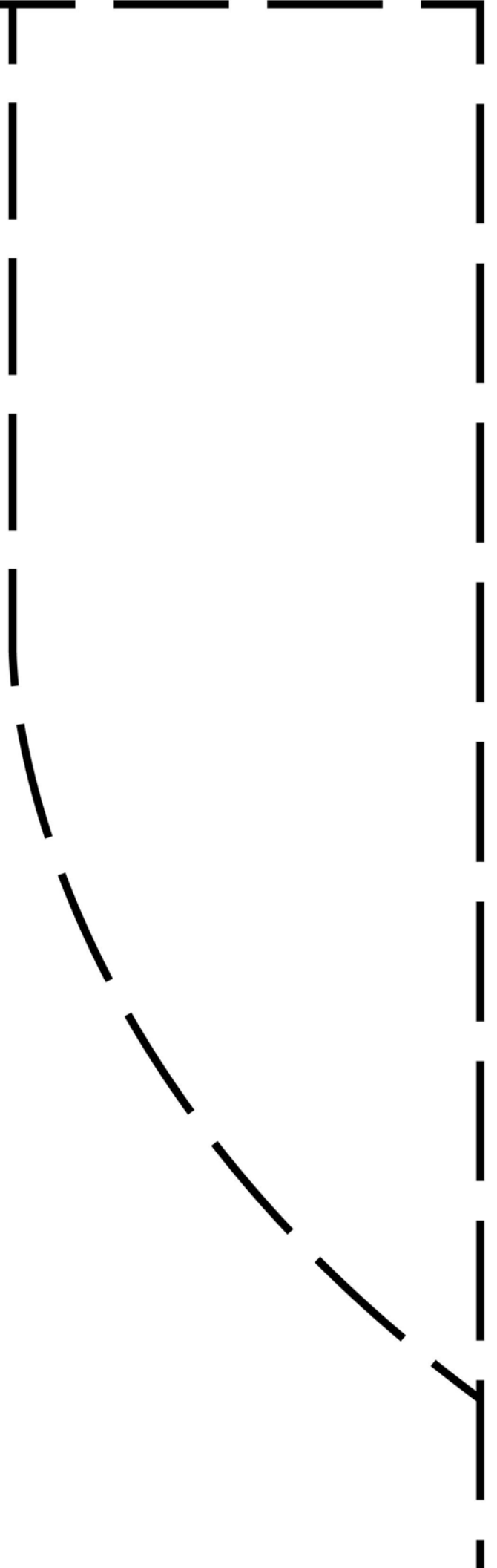




**FOLD**



**4**





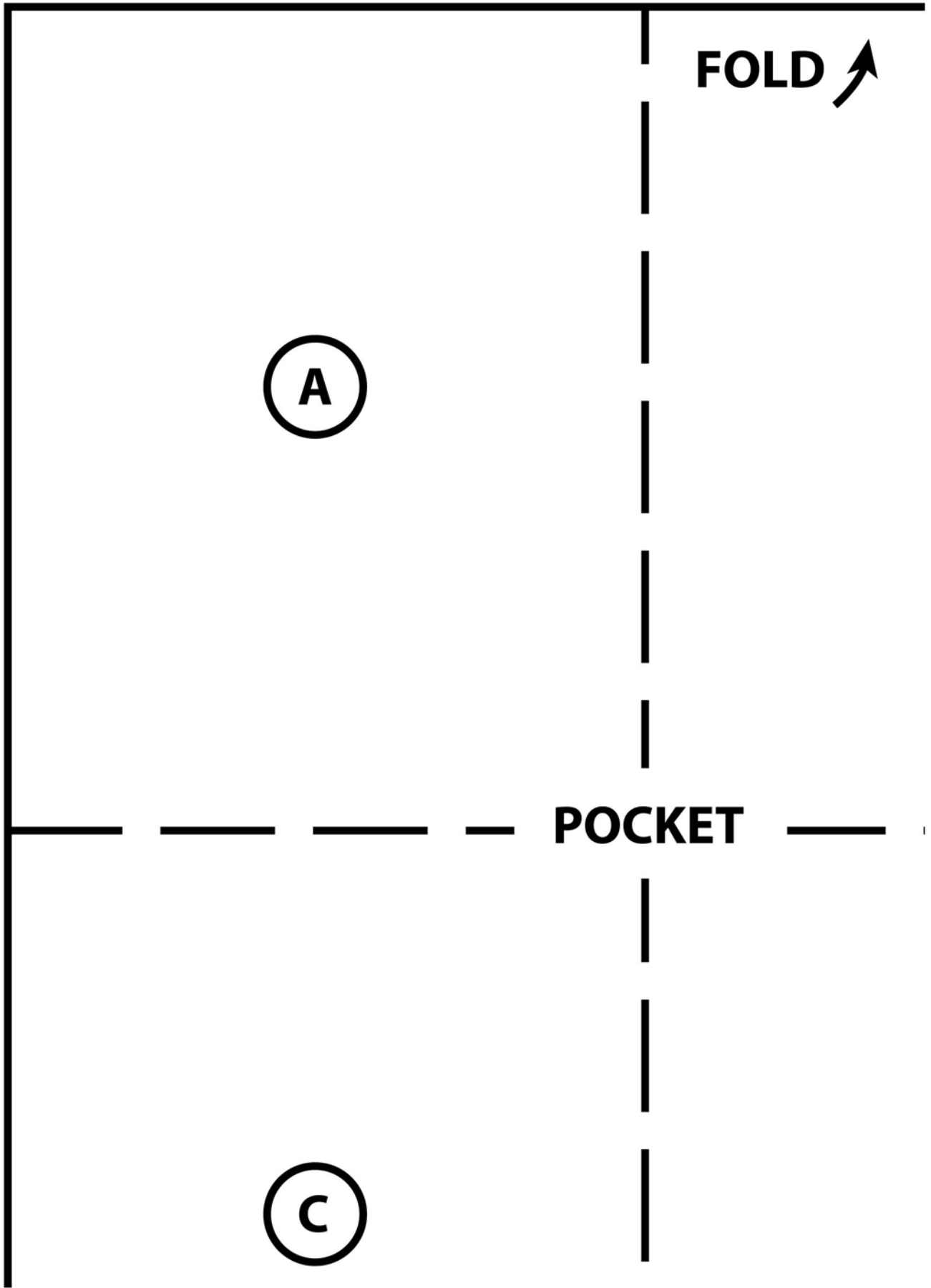
**POCKET**

**5**

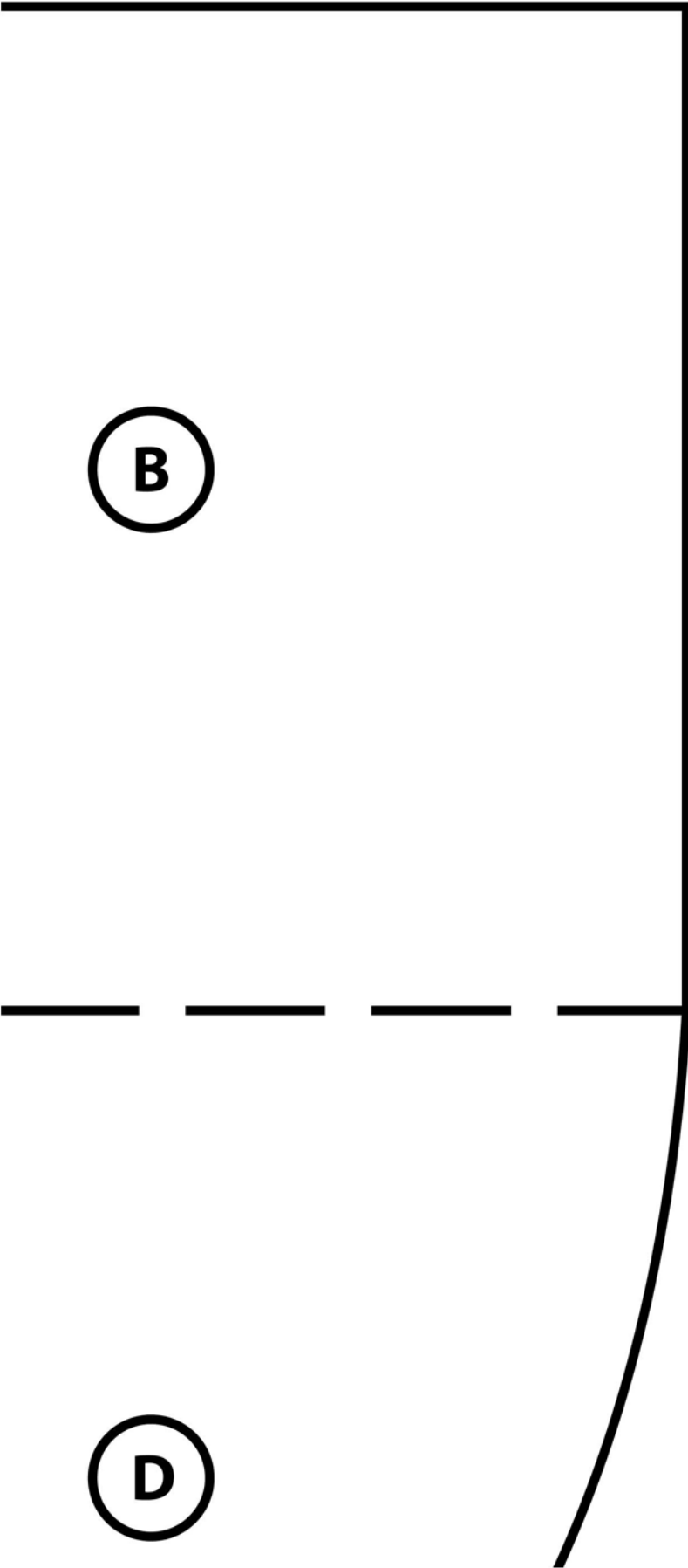
6

7

Pocket Pattern Piece



Pocket Pattern Piece



Pocket Pattern piece

